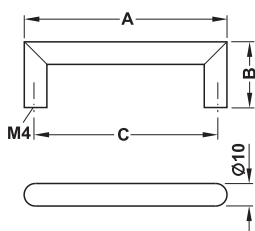


Furniture handle Ø 10 mm

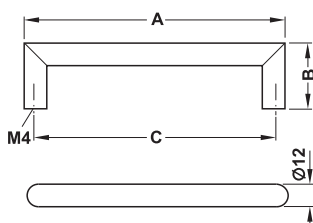


> Material: Stainless steel, quality 1.4301/AISI 304
> Finish/colour: Satin brushed

Dim. A mm	Dim. B mm	Dim. C mm	Packing pieces	Cat. No.
106	35	96	1 or 20	155.01.240
138	35	128	1 or 20	155.01.241
170	35	160	1 or 20	155.01.242
202	35	192	1 or 20	155.01.243
234	35	224	1 or 20	155.01.244
298	35	288	1 or 10	155.01.245
330	35	320	1 or 10	155.01.246
362	35	352	1 or 10	155.01.247
458	35	448	1 or 10	155.01.248
570	35	560	1 or 8	155.01.249

Lettering clip ▶ FF 1.200

Furniture handle Ø 12 mm



> Material: Stainless steel, quality 1.4301/AISI 304
> Finish/colour: Satin brushed

Dim. A mm	Dim. B mm	Dim. C mm	Packing pieces	Cat. No.
108	35	96	1 or 10	155.01.250
140	35	128	1 or 10	155.01.251
172	35	160	1 or 10	155.01.252
204	35	192	1 or 10	155.01.253
236	35	224	1 or 10	155.01.254
300	35	288	1 or 10	155.01.255
332	35	320	1 or 10	155.01.256
364	35	352	1 or 8	155.01.257
460	35	448	1 or 8	155.01.258
492	35	480	1 or 7	155.01.259
572	35	560	1 or 6	155.01.260
652	35	640	1 or 20	155.01.261
972	35	960	1 or 10	155.01.262

M4 threaded screws ▶ FF 1.260

DGH-M-INT 2020, HDE-en, 05/19; Dimensional data not binding. We reserve the right to alter specifications without notice.

Timeless Furniture Handles